

Home > School Performance Reports > Modify Report Selections

14 2 of 11 Find | Next

Document Map

School Performance Report

- Overview
- Demographic
- Climate and Environment
- Staff
- Narrative

Overview

Climate and Environment

Staff

Narrative

Demographic



NJ SCHOOL PERFORMANCE REPORT

Lincoln School Annex 2016-2017

03-1470-065
BERGEN
FAIRVIEW BORO
130 HAMILTON AVENUE
FAIRVIEW, NJ 07022

Enrollment Trends by Grade

This table shows the number of students enrolled by grade for the past three school years. Ungraded students are students who are "on roll" but are educated in ungraded classrooms.

Grade	2014-15	2015-16	2016-17
PK	64	75	80
KG	136	109	127
1	0	0	0
2	0	0	0
3	0	0	0
4	0	0	0
5	0	0	0
6	0	0	0
7	0	0	0
8	0	0	0
9	0	0	0
10	0	0	0
11	0	0	0
12	0	0	0
Ungraded	18	12	13

Enrollment Trends by Student Group

This table shows the percentage of students by student group for the past three school years. Data for some student groups was not available before 2016-17.

Student Group	2014-15	2015-16	2016-17
Female	45%	46%	47%
Male	55%	54%	53%
Economically Disadvantaged Students	68%	66%	71%
Students with Disabilities	11%	17%	17%
English Learners	28%	41%	10%
Homeless Students			2%
Students in Foster Care			0%
Military-Connected Students			0%
Migrant Students			0%

Enrollment by Racial and Ethnic Group

This table shows the percentage of students by racial and ethnic group.

Racial and Ethnic Group	% of Students
Hispanic	80.0%
White	19.1%
Asian	0.5%
Black or African American	
American Indian or Alaska Native	
Native Hawaiian or Pacific Islander	
Two or More Races	

PreK and K - Full Day and Half Day

This table shows the full day and half day enrollment for Pre-Kindergarten (PK) and Kindergarten (KG) students in this school.

Grade	2014-15	2015-16	2016-17
PK - Half Day	66	61	66
PK - Full Day	0	14	14
KG - Half Day	0	0	0
KG - Full Day	127	109	127

Enrollment by Home Language

This table shows the percentage of students by primary home language. Only the top 5 languages with at least 1% of students are shown. All other students are included in Other Languages.

Home Language	% of Students
Spanish	71.4%
English	20.5%
Arabic	6.4%
Other	2.0%

An "*" indicates that data is not displayed to protect student privacy. "N" indicates no data is available to display

Home > School Performance Reports > Modify Report Selections

14 3 of 11 Find | Next

- Document Map
- School Performance Report
- Demographic
- Climate and Environment
- Staff
- Narrative

Overview Demographic

Climate and Environment

Staff

Narrative



**Lincoln School Annex
2016-2017**

03-1470-065
BERGEN
FAIRVIEW BORO
130 HAMILTON AVENUE
FAIRVIEW, NJ 07022

This section shows information about student absences which provides important information about a school's culture and climate. In addition, research shows that student absences impact a child's ability to succeed in school. The New Jersey Department of Education selected chronic absenteeism as its measure of school quality and student success for the ESSA accountability plan. **Chronic absenteeism** is defined as being absent for 10% or more of the days enrolled during the school year. A student who is not present for any reason, excused, unexcused or for disciplinary action, is considered absent unless permitted by statute or regulation.

Chronic Absenteeism

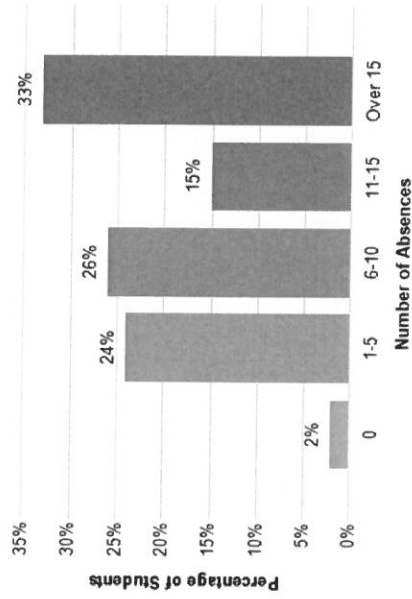
This table shows the percentage of students in grades K-12 in the school and each student group who were chronically absent. This table also shows whether the school and each student group met the ESSA accountability targets for 2016-17.

Student Group	% Chronically Absent	2016-17 Target	Met 2016-17 Target
Schoolwide	17.30	12.50	Not Met
White	20.80	12.50	Not Met
Hispanic	16.70	12.50	Not Met
Black or African American	N	**	**
Asian, Native Hawaiian, or Pacific Islander	0	**	**
American Indian or Alaska Native	N	**	**
Two or More Races	N	**	**
Economically Disadvantaged Students	16.30	12.50	Not Met
Students with Disabilities	0	**	**
English Learners	15.00	12.50	Not Met

** ESSA accountability targets are only included if data is available for at least 20 students. An "*" indicates that data is not displayed to protect student privacy. "N" indicates no data is available to display

Days Absent

The graph displays the percentage of K-12 students schoolwide by the number of days they were absent during the school year. An absence is defined as being 'not present' and includes both excused and unexcused absences.



Document Map

School Performance Report

- Overview
- Demographic
- Climate and Environment
- Staff
- Narrative

Overview

Climate and Environment

Narrative

Staff



NJ SCHOOL PERFORMANCE REPORT

Lincoln School Annex
2016-2017

03-1470-065
BERGEN
FAIRVIEW BORO
130 HAMILTON AVENUE
FAIRVIEW, NJ 07022

This section contains information about staff that are assigned to the school and district. Here is an explanation of some of the **key terms used in the staff section:**
Faculty: All classroom teachers and educational support services personnel (such as Librarians, Nurses, Counselors, and Child Study Team members)
Teachers: All classroom teachers
Administrators: Principals, assistant principals, supervisors, coordinators, directors, and other central-office administrators, as well as superintendents and other district-level administrators
Full-Time Equivalent: In calculations, staff members are weighted based on the percentage of their time that they are assigned to a school or district. For example – a teacher assigned to a school half time would be weighted 50% in calculations, but a teacher assigned to a school full time would be weighted 100% in calculations.

Teachers – Experience and Certifications
 This table shows information about experience and certifications for teachers assigned to this school and across the state.

Category	Teachers in Schools	Teachers in State
Total Number of teachers	15	121,048
Average years experience in public schools	11.3	11.8
Teachers in district for 4 or more years	60%	74%

Administrators – Experience (District Level)
 This table shows information about experience for administrators assigned to this district and across the state.

Category	Admin. in District	Admin. in State
Total Number of administrators	7	9,533
Average years experience in public schools	20.4	15.9
Average years experience in district	20.0	11.6
Administrators in district for 4 or more years	100%	74%

Student to Staff Ratios

This table shows the number of students per staff member in the school and district. Ratios for librarians, nurses, counselors, and child study team members are only reported at the district level because many staff in these jobs are assigned only to the district and not to individual schools.

Staff Type	School Students: Staff	District Students: Staff
Teachers	15:1	16:1
Administrators	44:1	205:1
Librarian/Media Specialists		1435:1
Nurses		718:1
Counselors		1435:1
Child Study Team		478:1

An "*" indicates that data is not displayed to protect student privacy. "N" indicates no data is available to display

Home > School Performance Reports > Modify Report Selections

Find | Next

- Document Map
- School Performance Report
 - Overview
 - Demographic
 - Climate and Environment
 - Staff
 - Narrative

Narrative



NJ SCHOOL PERFORMANCE REPORT

Overview Demographic Climate and Environment Staff

Lincoln School Annex
2016-2017

03-1470-065
BERGEN
FAIRVIEW BORO
130 HAMILTON AVENUE
FAIRVIEW, NJ 07022

School General Info

Principal:	Mrs. Scerbo	Email Address:	vscerbo@fairviewps.org
Address:	130 HAMILTON AVENUE FAIRVIEW, NJ 07022	Website:	www.fairviewps.org
Phone:	(201)943-0564	Facebook:	https://www.facebook.com/FairviewPublicSchools/
		Twitter:	https://twitter.com/FairviewNjps

School Narrative

This section allows schools and districts to share highlights, achievements, and other important information about programs, activities, and services that are offered in their own words. If there are questions about the information provided in the narrative section, please contact your school directly.

<p>Highlights:</p> <ul style="list-style-type: none"> • Each classroom has a Smartboard • Curriculum includes: The Wonders Reading Series, Go Math, Words Their Way and My First Writing Prompt • Students participate in Music, Art, Library and Physical Education classes 	
<p>Mission, Vision, Theme:</p> <p>The mission of the Fairview School District is to create a safe and nurturing academic environment that celebrates the ethnic diversity of the community.</p>	